



byRemote Surveillance Center

End-User Manual (Viewer Authorization) Version 2.0

byRemote, Inc.
3535 Main Avenue, Suite B Fargo ND 58103
Sales: (701) 234-9060 #1 | Support: (701) 234-9060 #2
support@byremote.net
www.byremote.net

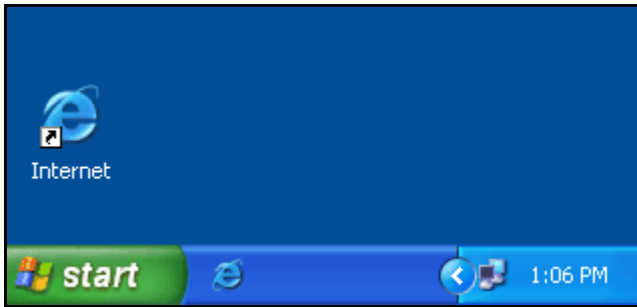
Table of Contents:

byRemote Surveillance Center Operation

<u>Opening Website</u>	3
<u>Logging In</u>	4
<u>Installing Registry Patch</u>	5,6
<u>Feature Overview</u>	7
<u>View Cameras</u>	8
<u>Standard Resolution</u>	8
<u>High Resolution</u>	9
<u>Pan/Tilt/Zoom Controls</u>	10
<u>Audio Controls</u>	10
<u>Popup Window</u>	11
<u>Snapshot</u>	12
<u>View Camera Groups</u>	13
<u>Thumbnail View</u>	13
<u>Normal View</u>	13
<u>Popup Window</u>	14
<u>Create/Edit/View Group Buttons</u>	15
<u>Create Group</u>	15
<u>Edit Group</u>	16
<u>View Group</u>	16
<u>Archives</u>	16
<u>View Archive Dates</u>	17
<u>View Archive Times</u>	18
<u>Archive Player Controls</u>	19
<u>Archive Resolutions</u>	19
<u>Events</u>	20
<u>Create Event</u>	20
<u>View Event</u>	21
<u>Download Event</u>	21
<u>Delete Event</u>	21
<u>Support Information</u>	22

Opening Website:

Open the Microsoft Internet Explorer by double-clicking the icon located on the Desktop.



Type in the following URL in the Address bar:

<http://www.byremote.net/member>

Your Username _____

Your Password _____

- or -

For onsite storage servers: Type in the IP Address that has been assigned to your storage server. Example: <http://192.168.1.100> or <http://localhost>

Your Username _____

Your Password _____

Logging In:

Enter your username and password into the byRemote Surveillance Center login Page. (If you get an '**Invalid username or password.**' message check your username & password spelling.)

b byRemote Surveillance Center 2.0

Username

Password

Guest Login
User Name: demo
Password: demo

byRemote announces the release of Version 2.0 - 08/2
Welcome to the byRemote Surveillance Center 2.0. We are pleased to present you with more information about Version 2.0, please feel free to contact us at any time. We please visit our website at <http://www.byremote.net>.









Installing Registry Patch:

The first time you visit the byRemote Surveillance Center, you may not be able to view the live streaming video. Microsoft has released a Critical Update for Internet Explorer 6.0, which disables the way byRemote calls the video. The following explains how to disable this function by installing a patch into your PC's registry. The patch is harmless and enables the video feeds to perform correctly.

Step 1:

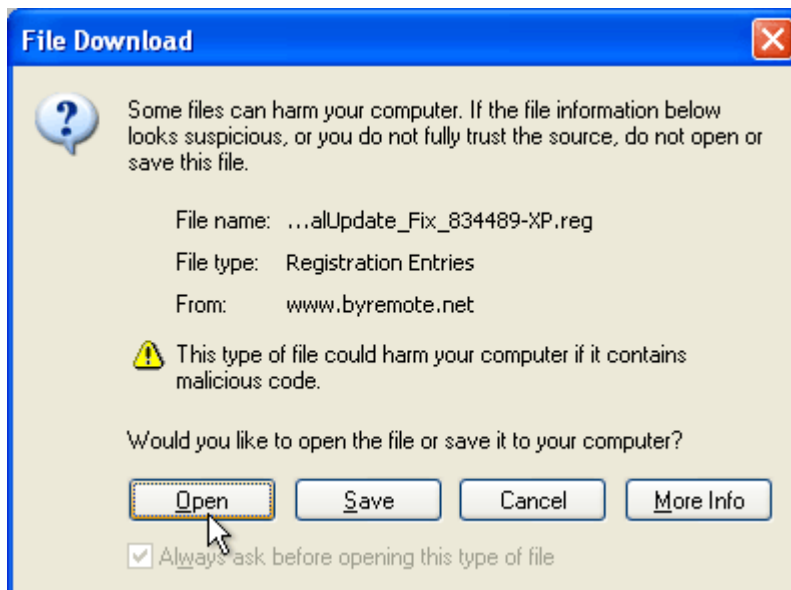
When logged in to the byRemote Surveillance Center, click on the Utilities button at the top of the window. Then click on the link to download the correct patch for your Operating System. (Readme files and/or instructions are linked when available.)



Description	Last Update	Readme	Download
 Windows 2000/XP Users: Patch to allow live streaming video feed.	09/25/2004 09:57:51 PM		
 Windows 98/ME/NT Users: Patch to allow live streaming video feed.	09/25/2004 09:57:51 PM		
 Axis IP self-installer for all Axis devices (for on-site clients).	09/25/2004 09:57:51 PM		

Step 2:

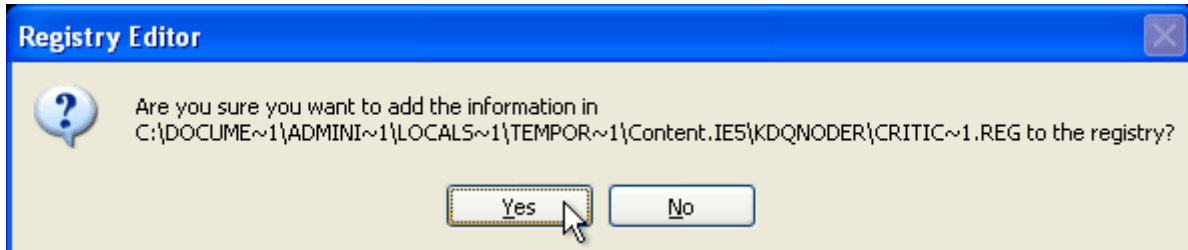
When the File Download prompt comes up, click on the Open button.



Installing Registry Patch: (continued...)

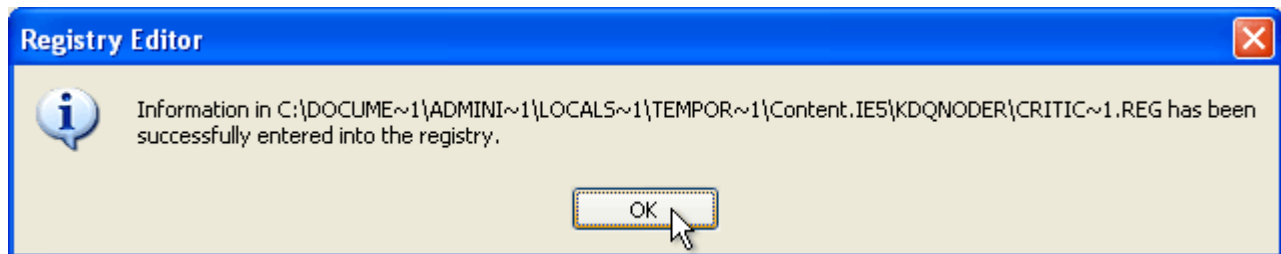
Step 3:

When the Registry Editor prompt comes up, click on the Yes button.



Step 4:

You have now successfully installed the Registry Patch into your PC's registry. Click OK to close the Registry Editor.



Step 5:

Close your Internet Explorer browser and then open your browser to go back to the byRemote Surveillance Center.

Feature Overview:

Navigation of your surveillance cameras is simple with the byRemote Surveillance Center. Below are brief explanations of what you will find after logging in.

byRemote Surveillance Center 2.0

demo (Viewer) ← Name and Authorization of user logged in.

Logged in at 10:40 PM : 08/28/2004 ← The date and time the user logged in.

All Cameras [v] ← Dropdown list of camera viewing groups.

Create Group Edit Group View Group ← Management of camera viewing groups.

AXIS 205
AXIS 210
AXIS 2100
AXIS 211
AXIS 2110
AXIS 2120
AXIS 2130 PTZ
AXIS 2191 AUDIO
AXIS 2400+
AXIS 2401+
AXIS 241Q
AXIS 241S
AXIS 2420
SONY SNC-RZ30

← List of customer cameras depending on user authorization.

News and updates posted from the Administrator of your cameras to other users.

byRemote announces the release of Version 2.0 - 08/28/2004

Welcome to the byRemote Surveillance Center 2.0. We are pleased to present you with updated features and a brand new user-friendly interface. If you would like more information about Version 2.0, please feel free to contact us at any time. We would be happy to answer any questions you may have. To contact us, please visit our website at <http://www.byremote.net>.

Unable to View Live Video? - 08/28/2004

If you are unable to view the live streaming video, please read the following instructions on how to install a Registry Patch that fixes a feature disabled by the Microsoft Critical Update for Internet Explorer 6.0. <http://www.byremote.net/support>

Navigation bar.

Home Events Utilities Support Logout

Back to home page

View saved events from archives

Download tools and utilities

Submit support question

Log out of the BSC 2.0

View Cameras:

Click on the name of the camera you wish to view from the customer camera list. Only the cameras that your username and password are allowed to see will populate this list.

Once you've clicked on a camera, you will be taken to live streaming video of the camera in standard resolution. From here you will have more viewing options.


AXIS 205
AXIS 210
AXIS 2100
AXIS 211
AXIS 2110
AXIS 2120
AXIS 2130 PTZ
AXIS 2191 AUDIO
AXIS 2400+
AXIS 2401+
AXIS 241Q
AXIS 241S
AXIS 2420
SONY SNC-RZ30

Standard Resolution:

Depending on the camera/device's resolution, standard resolution will range from 320x240 to 352x240. The byRemote Surveillance Center will detect the proper resolution and show you the correct resolution for that camera/device. On the tabbed menu, it will appear as the "Normal" tab.

Normal
Large
Archives
Snapshot
Popup

← Additional options



Name: AXIS 205
Description: Live video from anywhere your network goes. The AXIS 205 is the smallest network camera from the biggest name i IP address and built-in web server, it runs directly off your network. It offers superior image quality with three resolution modes up 30 frames per second in all modes. Support for up to 20 users simultaneously. You can view its live video over any standard brow affordably, even add password protection. It's perfect for monitoring property, people or businesses, and showing facilities or eve! This is a 10 lux camera which is best used in a well-lit environment. Axis 2191 Audio Module not supported. No enclosure available and power supply included.
Link: [Specification sheet](#) (pdf)
Archive resolution: 320x240 (standard resolution)
Status: Recording for 7 days

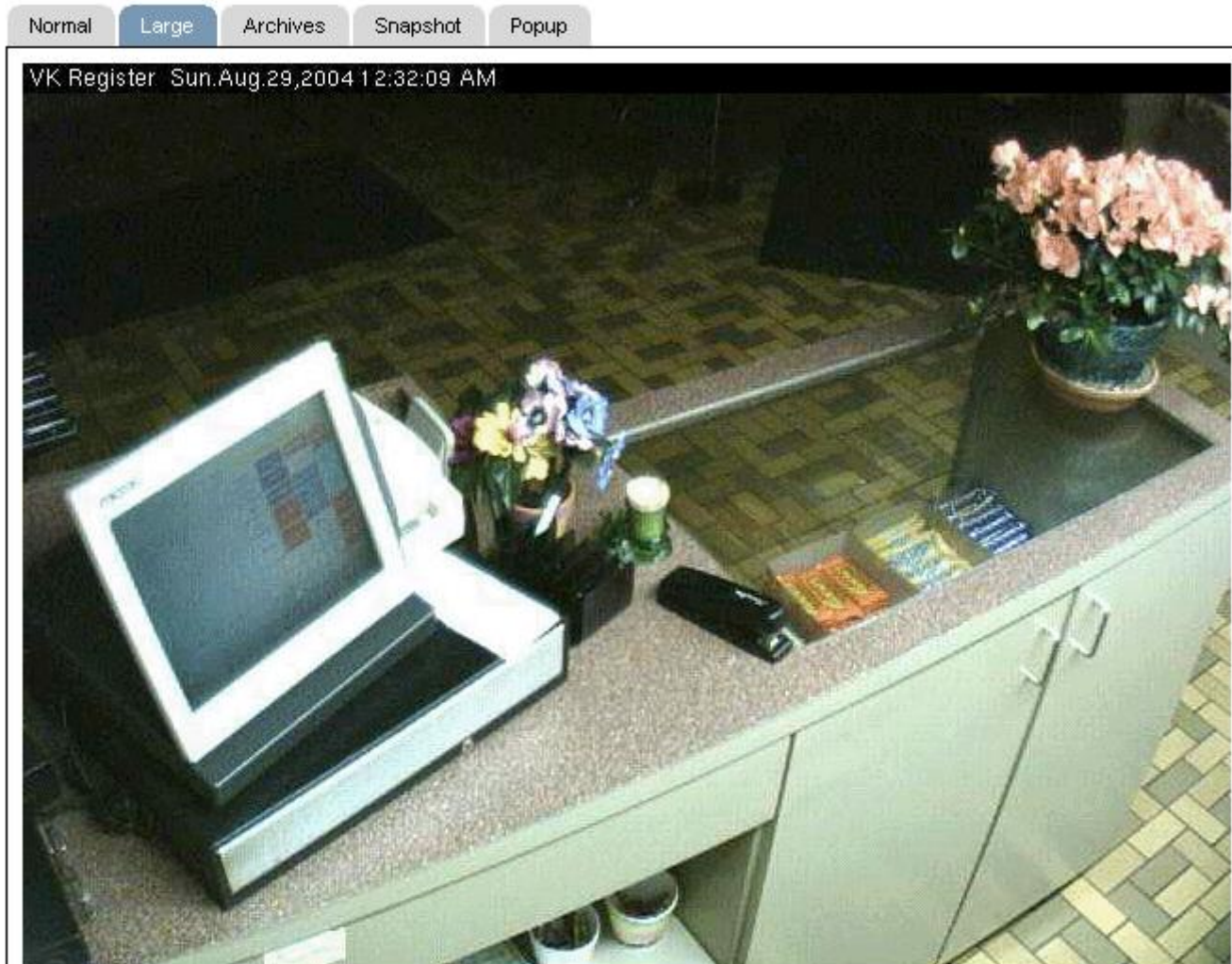
← Date and time stamp

← Live streaming video in standard resolution

← **Name, Description and Status** of the camera/device. (Link and Archive resolution are only listed for purposes of our online demo)

High Resolution:

Depending on the camera/device's resolution, high resolution will range from 640x480 to 702x480.



Name: AXIS 205

Description: Live video from anywhere your network goes. The AXIS 205 is the smallest network camera from the biggest name in IP address and built-in web server, it runs directly off your network. It offers superior image quality with three resolution modes up to 30 frames per second in all modes. Support for up to 20 users simultaneously. You can view its live video over any standard browser affordably, even add password protection. It's perfect for monitoring property, people or businesses, and showing facilities or events. This is a 10 lux camera which is best used in a well-lit environment. Axis 2191 Audio Module not supported. No enclosure available for and power supply included.

Link: [Specification sheet](#) (pdf)

Archive resolution: 320x240 (standard resolution)

Status: Recording for 7 days

Pan/Tilt/Zoom Controls:

Control the camera's movement with the controls to the right of the streaming video.

Normal Large Archives Snapshot Popup

2130LitcoDemo Sun Aug 29 17:36:11 2004



- Pan: Left & Right
- Tilt: Up & Down
- Zoom: In & Out
- Resets back to home
- Preset positions

NOTE: As new camera manufacturers are added to the byRemote Surveillance Center, the controls may change in appearance. However, the functions will remain identical.


Audio Controls:

The Axis 2191 Audio Module can connect to a select number of Axis cameras or video servers to enable the end-user to listen and/or talk over the Internet.

NOTE: "Talk" controls are also available but have been disabled on our live online demonstration.

Normal Large Archives Snapshot Popup

Tue Nov 10 20:40:45 2003

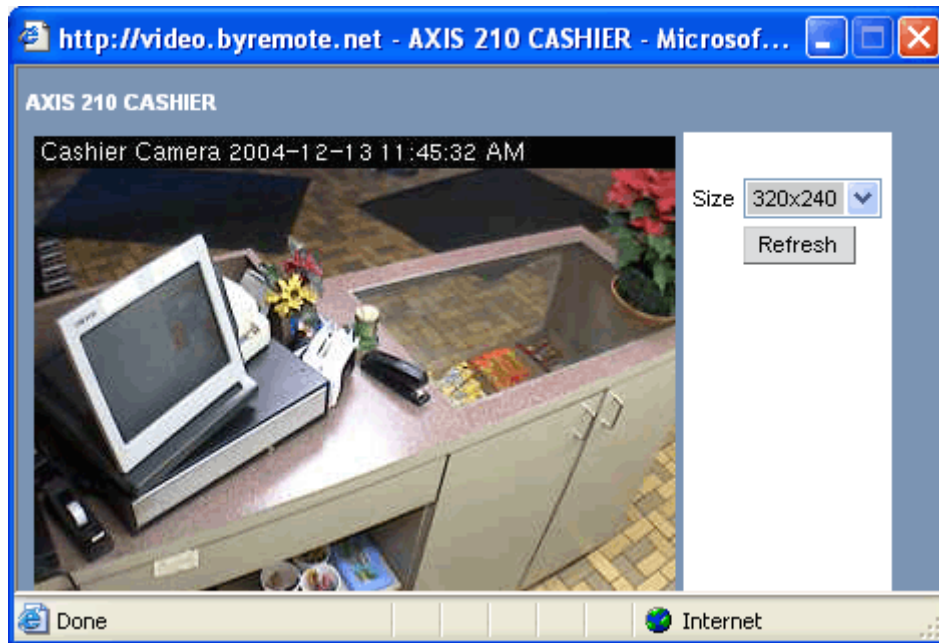
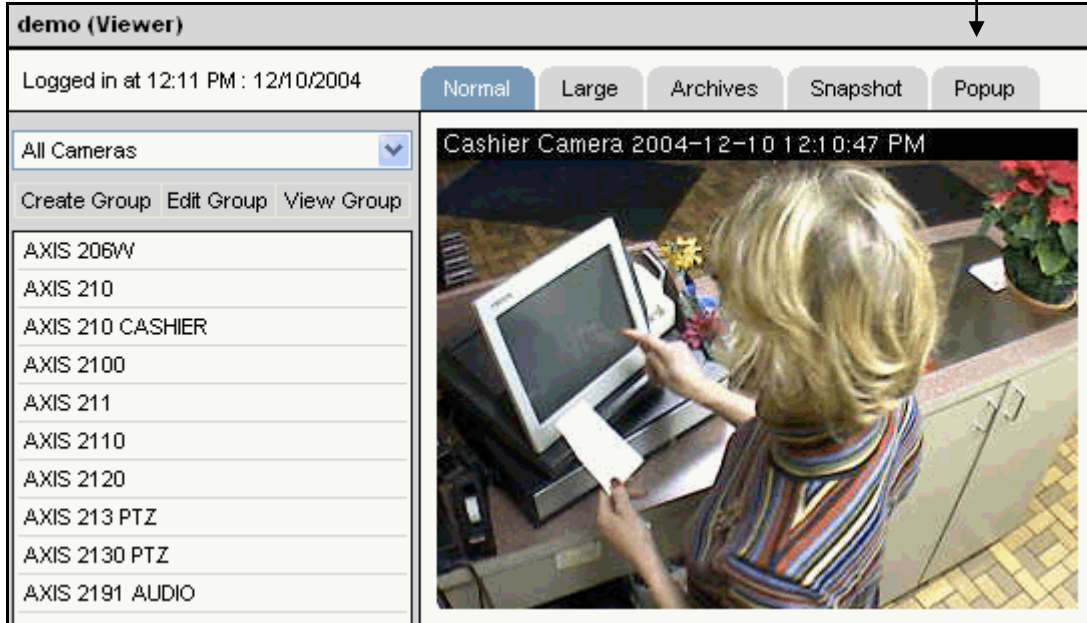


“Listen” controls: mute, volume →

Connection speed. We find that setting the connection speed to 0.2 Mbit/s creates a smoother audio stream.

Popup Window:

Clicking on the Popup tab, a user may view the video in a separate window. This will allow you to continue working in other Windows applications and view your video at the same time.



Snapshot:

You may capture a live snapshot (or “still image”) at any time by clicking on the Snapshot tab. This will convert the live video feed to a JPEG image in a new Window.

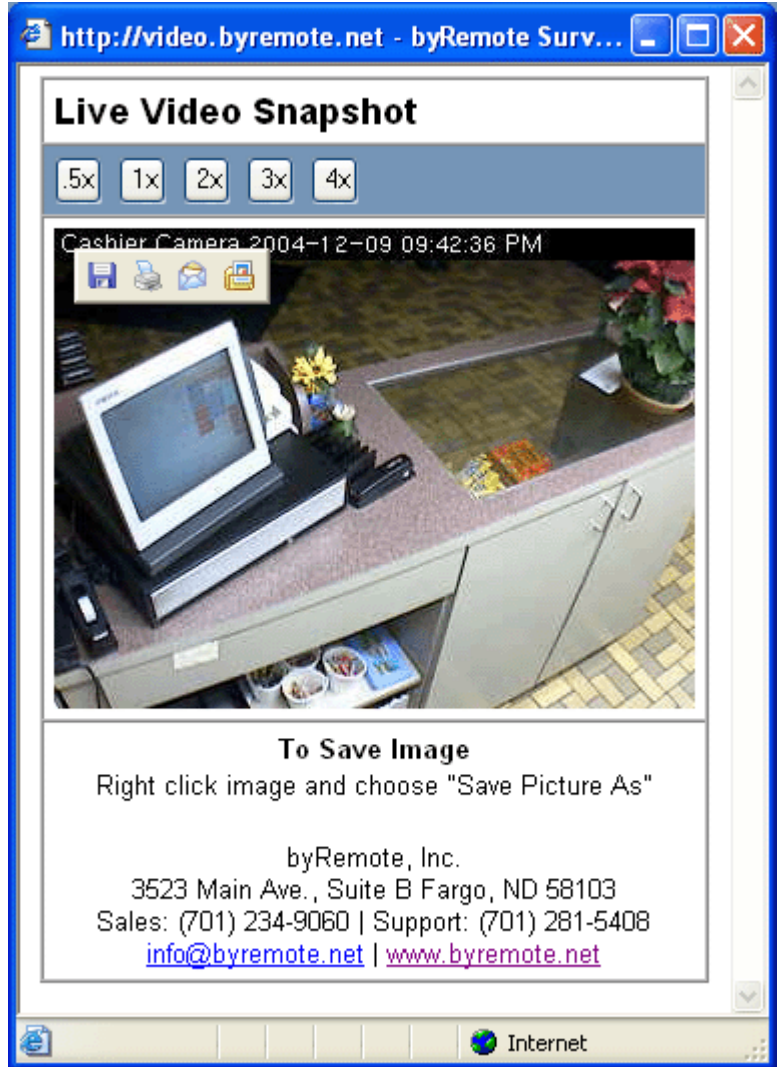
Digitally enlarge the image.



Move your mouse over the image to Save, Print or E-mail the JPEG image.



Contact and support numbers and information.



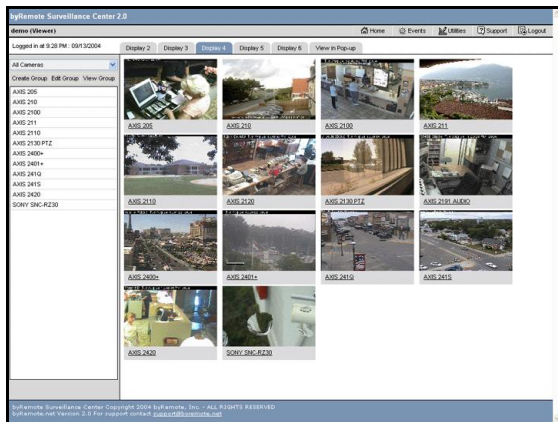
View Camera Groups:

From the drop-down menu above the list of cameras, you may choose to view a group of cameras. This will allow you to view multiple cameras in live streaming video.

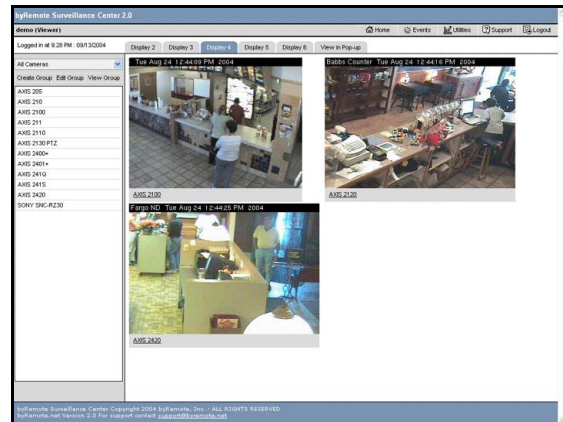
The screenshot shows the 'byRemote Surveillance Center 2.0' interface. At the top, there are navigation buttons: 'Display 2', 'Display 3', 'Display 4', 'Display 5', 'Display 6', and 'View in Pop-up'. Below these is a header 'demo (Viewer)' and a login status 'Logged in at 6:47 PM : 09/15/2004'. A dropdown menu is open, showing a list of camera categories and models: 'All Cameras', 'INDOOR CAMS', 'NORTH DAKOTA CAMS', 'OUTDOOR CAMS', 'TEST', 'AXIS 2100', 'AXIS 211', 'AXIS 2110', 'AXIS 2130 PTZ', 'AXIS 2400+', 'AXIS 2401+', 'AXIS 241Q', 'AXIS 241S', 'AXIS 2420', and 'SONY SNC-RZ30'. A vertical line connects the dropdown menu to the 'Display 2' button.

Control how many cameras you will see in each row. When a group has been created with "Thumbnail" size video feeds, you may want to choose to Display 4 or Display 5 video feeds per row. When a group has been created with "Normal" size video feeds, you may only be able to fit 2 feeds in each row.

Thumbnail View:
Fit many video streams on one page in thumbnail view.



Normal View:
View smaller groups in a larger resolution.

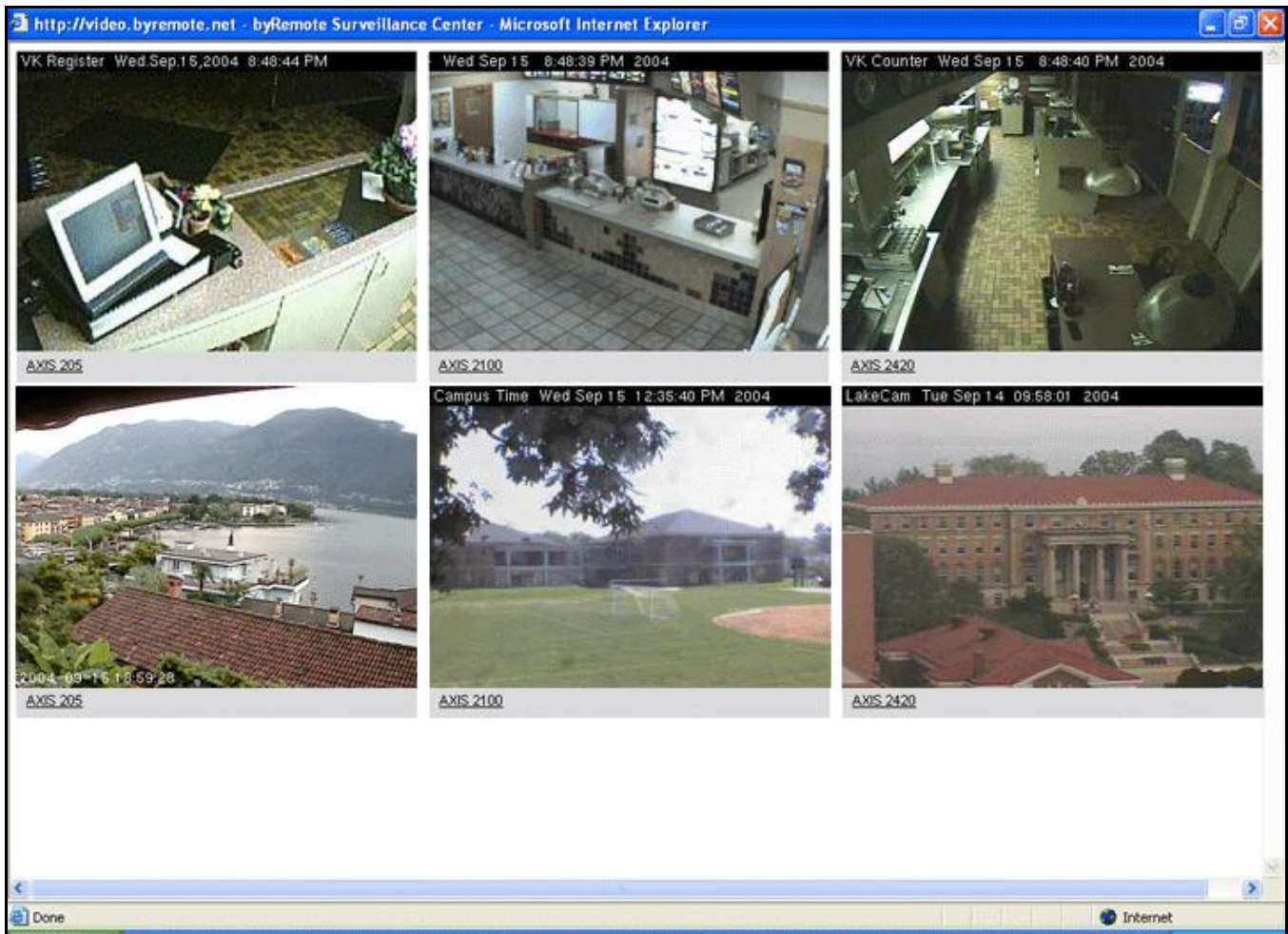


Group Popup Window:

Click on the "View in Pop-up" tab when viewing your group of cameras to view the video in a new window with video streams only.

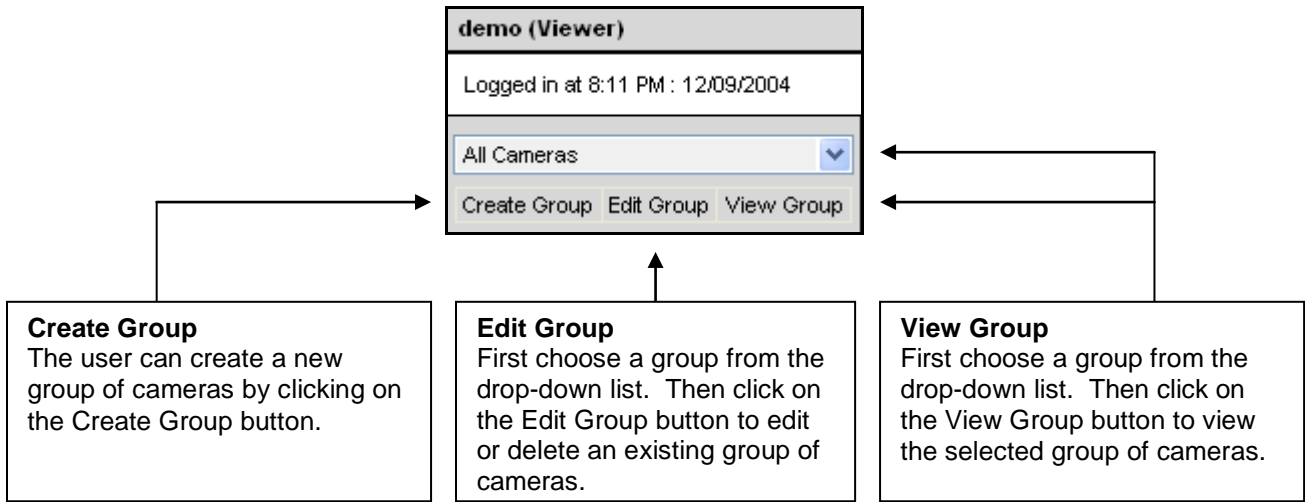


To fit as many video streams on your monitor as possible, you may choose to view the feeds in a popup window. This page will include the video only, without the rest of the BSC template around it.



Create/Edit/View Group Buttons:

Every user has the ability to create their own group of cameras. Some groups will be created by the Administrator for all users to view. Users cannot edit groups created by the Administrator.



Create Group:

Group Information

Group Name

Video Size Thumbnail Normal

Give the camera group a name. Then select the viewing size (Thumbnail or Normal).

Group Membership Information

Available Camera(s)

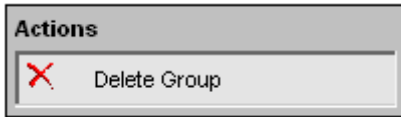
Camera Name	Status
<input type="checkbox"/> AXIS 206W	Disabled
<input type="checkbox"/> AXIS 210	Disabled
<input type="checkbox"/> AXIS 210 CASHIER	Enabled
<input type="checkbox"/> AXIS 2100	Enabled
<input type="checkbox"/> AXIS 211	Disabled
<input type="checkbox"/> AXIS 2110	Disabled
<input type="checkbox"/> AXIS 2120	Disabled
<input type="checkbox"/> AXIS 213 PTZ	Disabled
<input type="checkbox"/> AXIS 2130 PTZ	Enabled
<input type="checkbox"/> AXIS 2191 AUDIO	Disabled
<input type="checkbox"/> AXIS 2400+	Disabled
<input type="checkbox"/> AXIS 2401+	Disabled
<input type="checkbox"/> AXIS 241Q	Disabled
<input type="checkbox"/> AXIS 241S	Disabled
<input type="checkbox"/> AXIS 2420	Enabled
<input type="checkbox"/> SONY SNC-RZ30	Disabled

Camera(s) Assigned to the Group

Camera Name	Status
<input type="checkbox"/> AXIS 210	Disabled
<input type="checkbox"/> AXIS 211	Disabled
<input type="checkbox"/> AXIS 2110	Disabled
<input type="checkbox"/> AXIS 2130 PTZ	Enabled
<input type="checkbox"/> AXIS 206W	Disabled
<input type="checkbox"/> AXIS 2400+	Disabled
<input type="checkbox"/> AXIS 2401+	Disabled
<input type="checkbox"/> AXIS 241Q	Disabled
<input type="checkbox"/> AXIS 241S	Disabled
<input type="checkbox"/> SONY SNC-RZ30	Disabled
<input type="checkbox"/> AXIS 2120	Disabled

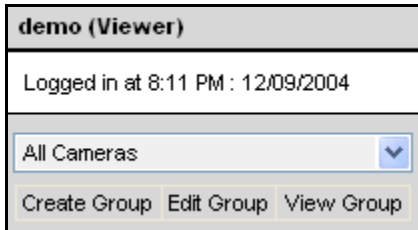
1. Select cameras from the list on the left by clicking on the checkbox next to the name of the camera.
2. Click on the Add Selected button to select the cameras you want to see in your group.
3. Click on the Add All button if you want to select all of the cameras in your list.
4. You may remove cameras from your group at any time.

Edit Group:



Follow the steps for adding and removing cameras into a group from [Create Group](#) above. You may also delete a group from this area.

View Group:

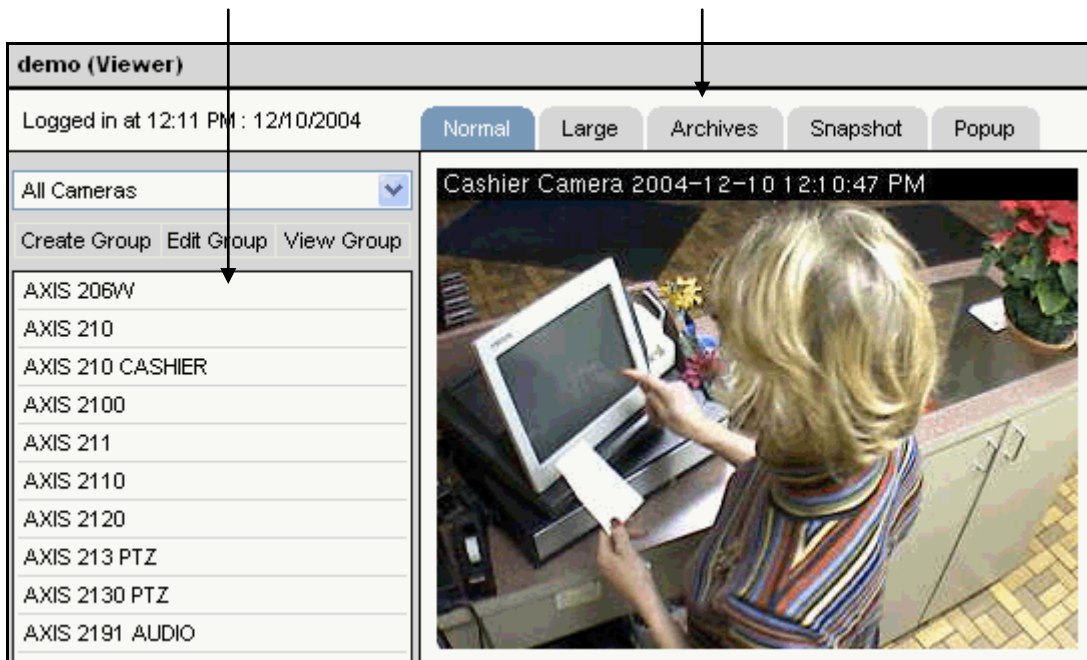


← Select a camera group from your drop-down list.

← Then click on the View Group button to view the camera group.

Archives:

To view a camera's archived video, click on the camera you wish to view from your list on the left hand side of your screen. Then click on the Archives tab above the live video stream.



View Archive Dates:

Each camera's available archives are displayed easily in calendar format. Click on the Archive button to go to the hour selection page.

Previous Month Current Month Next Month

Normal Large **Archives** Snapshot Popup

<< December 2004 >>

Sunday	Monday	Tuesday	Wednesday	Thursday	Friday	Saturday
28	29	30	1	2	3	4
5	6	7 <input type="button" value="Archive"/>	8 <input type="button" value="Archive"/>	9 <input type="button" value="Archive"/>	10 <input type="button" value="Archive"/>	11
12	13	14	15	16	17	18
19	20	21	22	23	24	25
26	27	28	29	30	31	1


View Archive Times:

Choose the timeframe you wish to view by clicking one of the hours in the grid. The blue rows indicate recorded video is available. The grey rows indicate video was not recorded.

Normal Large Archives Snapshot Popup

Video Available
 Video Not Available All archived video is listed in 1 hour increments. Click on a section below to go directly to the specified timeframe.

12/10/2004	
12:00 AM	
01:00 AM	
02:00 AM	
03:00 AM	
04:00 AM	
05:00 AM	
06:00 AM	
07:00 AM	
08:00 AM	
09:00 AM	
10:00 AM	
11:00 AM	
12:00 PM	
01:00 PM	
02:00 PM	
03:00 PM	
04:00 PM	
05:00 PM	
06:00 PM	
07:00 PM	
08:00 PM	
09:00 PM	
10:00 PM	
11:00 PM	



Click on the hour you wish to view. The archive player will pop up in a new window. Playback of the archived video will be available in the archive player. See the next section for instructions on how to play back the stored video.

Archive Player Controls:

After selecting a timeframe to view from the hour selection page, a new window will pop up for the Archive Player.

Name of camera →

Date/Time stamp →

Archived video →










Event controls →

Play controls →

← Digitally enlarge image

← Select another time-frame

← Speed up or slow down the play back in increments.

-  Back one frame
-  Back to the beginning of the hour
-  Fast Rewind
-  Rewind
-  Pause
-  Play
-  Fast Forward
-  Forward to the end of the hour
-  Forward one frame







Archive Resolutions:

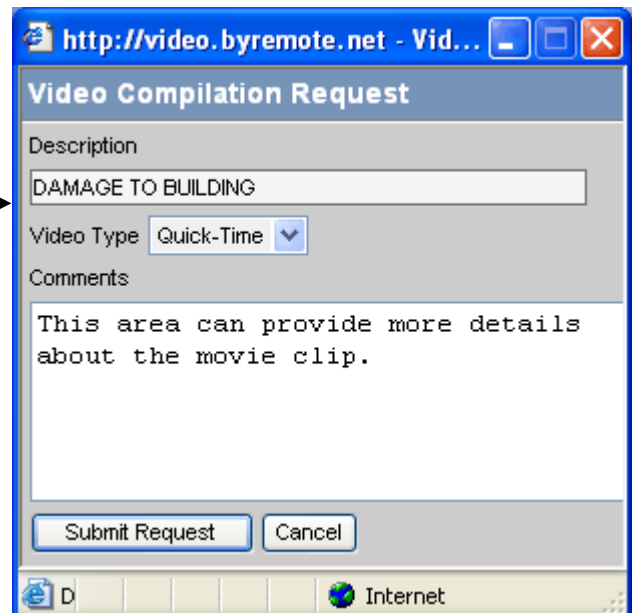
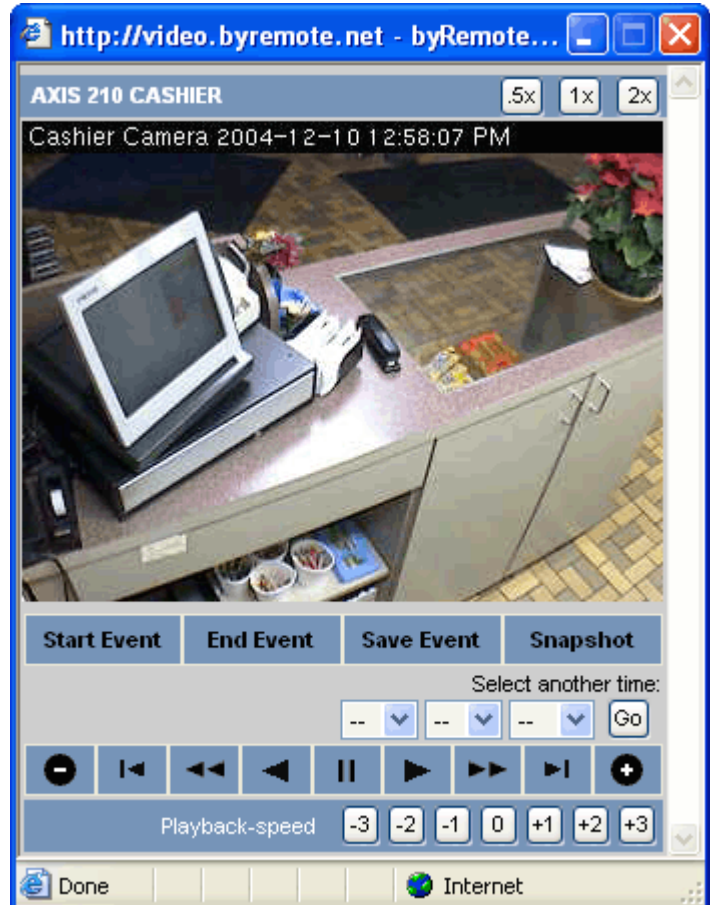
See [Standard Resolution](#) and [High Resolution](#)

Events:

Should you need to capture a period of time for your records, police or any other reason, you may download a movie clip from the Archive Player. This feature is called Events in the byRemote Surveillance Center.

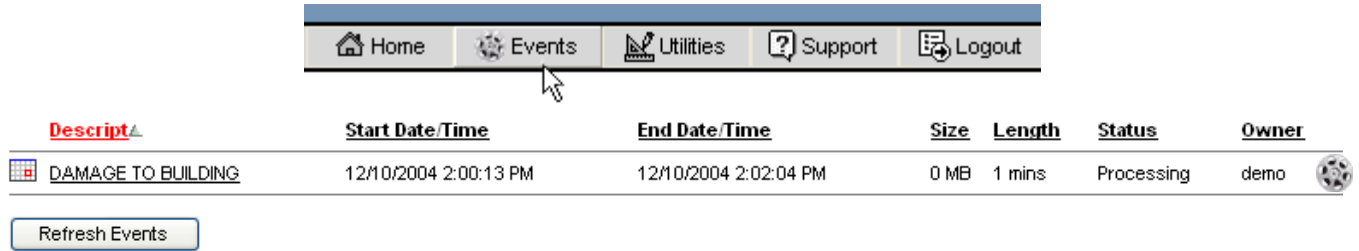
Create Event:

1. Find the beginning of the incident by playing the archived video in the Archive Player.
2. When you get to the beginning of the incident, press the Pause button.

3. Click on the Start Event button. (This will mark the video as the start of your download.)

4. Press the Play button to continue playing through the incident.

5. When you come to the end of the incident, press the Pause button again.

6. Click on the End Event button. (This will mark the video as the end of your download.)

7. Click on the Save Event button.

8. A Video Compilation Request window will pop up where you can enter a Description of the download and any other Comments you would like to make about the incident. Note: *Quick-Time video is the only format available at this time.*
9. Click the Submit Request button and your download will begin processing.



View Event:

Once you have specified your start time, end time and have given your event a description, you may view the status of your download by clicking on the Events button at the top of your screen.



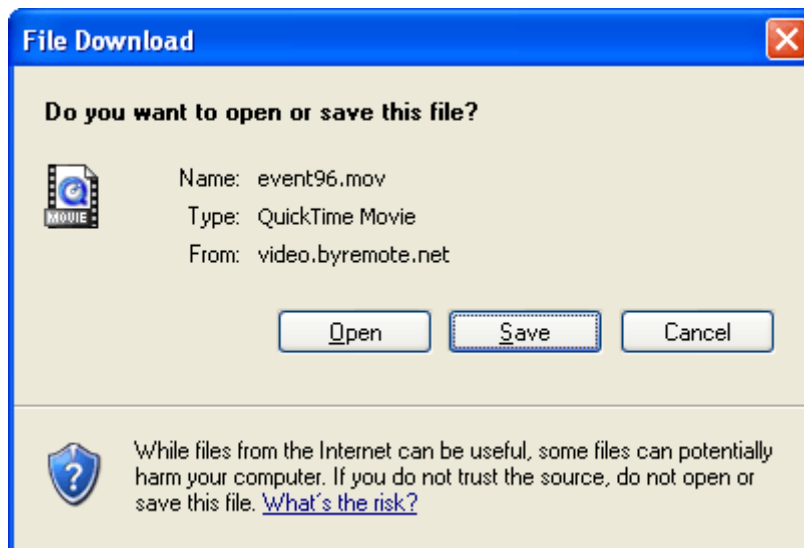
The screenshot shows the top navigation bar with buttons for Home, Events, Utilities, Support, and Logout. The Events button is highlighted with a mouse cursor. Below the navigation bar is a table of events with the following columns: Description, Start Date/Time, End Date/Time, Size, Length, Status, and Owner.

Description	Start Date/Time	End Date/Time	Size	Length	Status	Owner
DAMAGE TO BUILDING	12/10/2004 2:00:13 PM	12/10/2004 2:02:04 PM	0 MB	1 mins	Processing	demo

Below the table is a button labeled "Refresh Events".

Download Event:

When the download has finished processing, a film reel icon will appear at the end of the row. By clicking on the icon, you will be prompted to Open or Save the movie clip. Click on the Save button to save to your PC. Click on the Open button to launch QuickTime and play the movie clip.



You may download QuickTime from: <http://www.apple.com/quicktime/products/qt/> or by clicking on the Utilities button at the top of your screen.



Delete Event:

Unless the Administrator of the byRemote Surveillance Center has given you authorization to delete an Event, a user with Viewer rights will not be able to delete events from the software. **Please see your Administrator.**

Support Information:

By clicking on the Support button at the top of the screen, you may issue a support question to byRemote at any time. Complete the form and click on the Submit button.

Support Request

Enter a description of the problem in the form below, or contact byRemote at:

byRemote, Inc.
3535 Main Ave., Suite B
Fargo, ND 58103
Tel: (701) 234-9060
Fax: (701) 364-9165
Email: support@byremote.net
www.byremote.net

Customer Name	<input type="text"/>
Contact Name	<input type="text"/>
Phone Number	<input type="text"/>
Your E-mail	<input type="text"/>
Problem / Comments	<div style="border: 1px solid gray; height: 100px; width: 100%;"></div>

General Information & Sales (701) 234-9060 #1
E-Mail info@byremote.net

HelpDesk Technical Support Number..... (701) 234-9060 #2
E-Mail support@byremote.net

byRemote Website www.byremote.net
Demo Website..... www.byremote.net/demo

byRemote, Inc.
3535 Main Ave., Ste B
Fargo, ND 58103